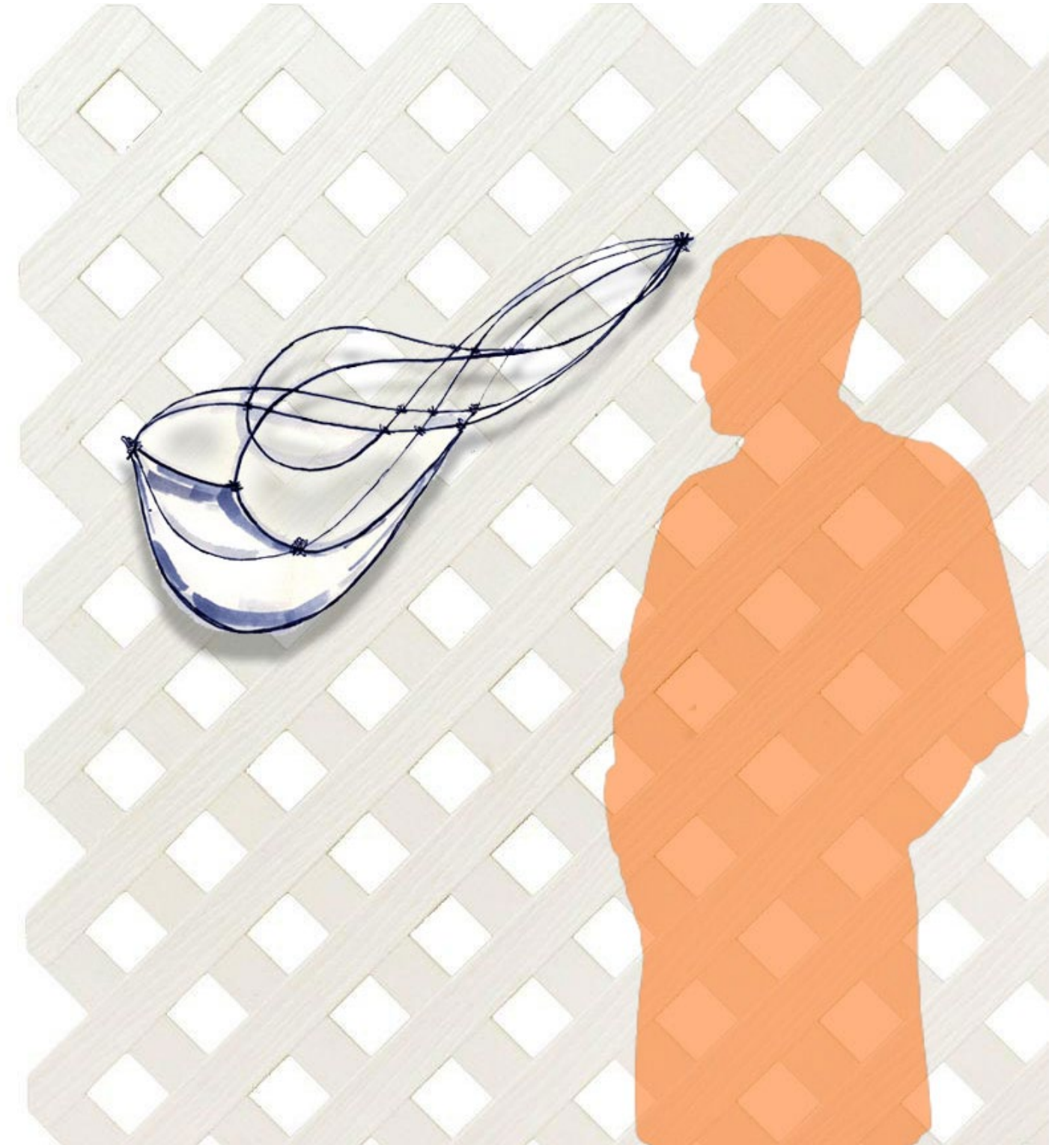


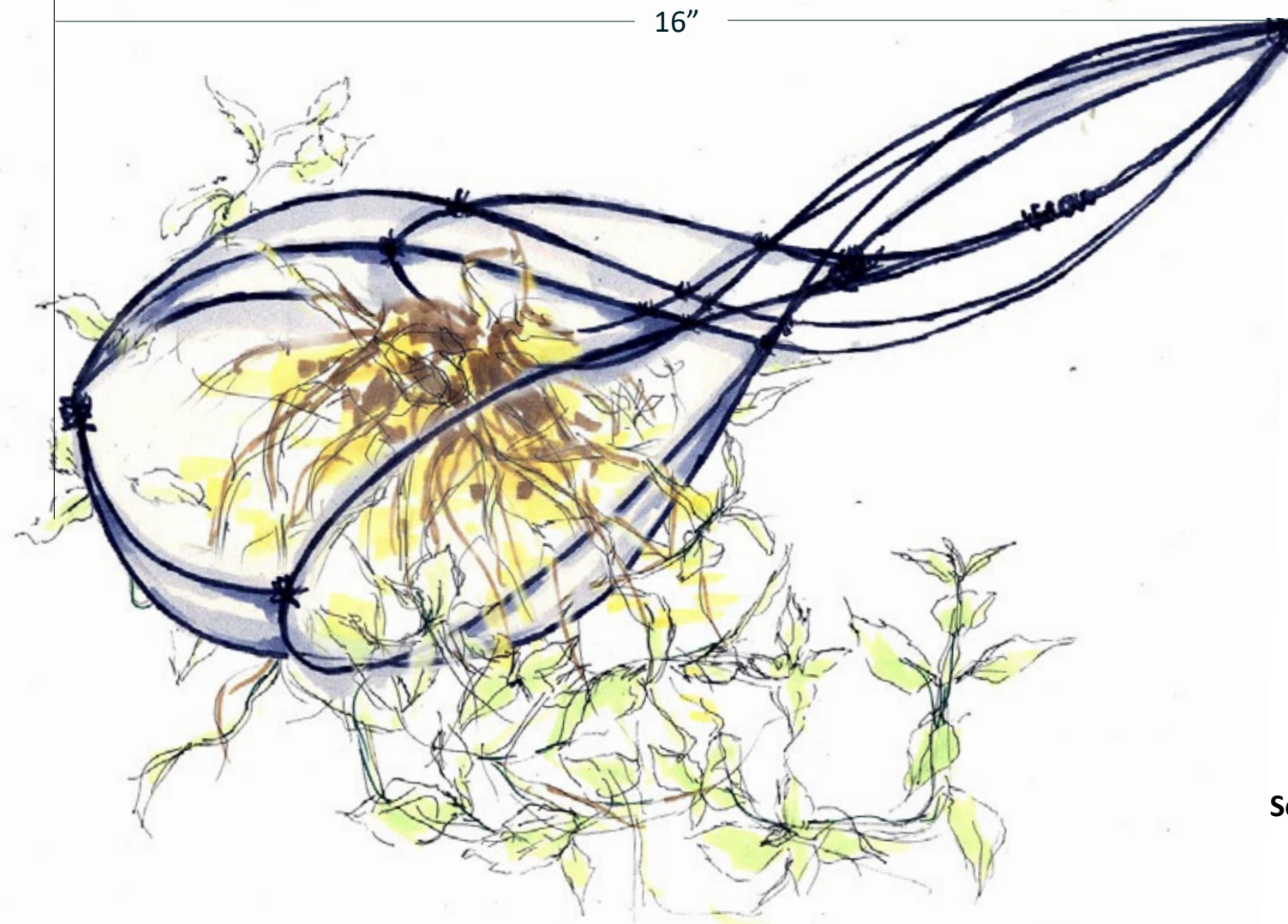
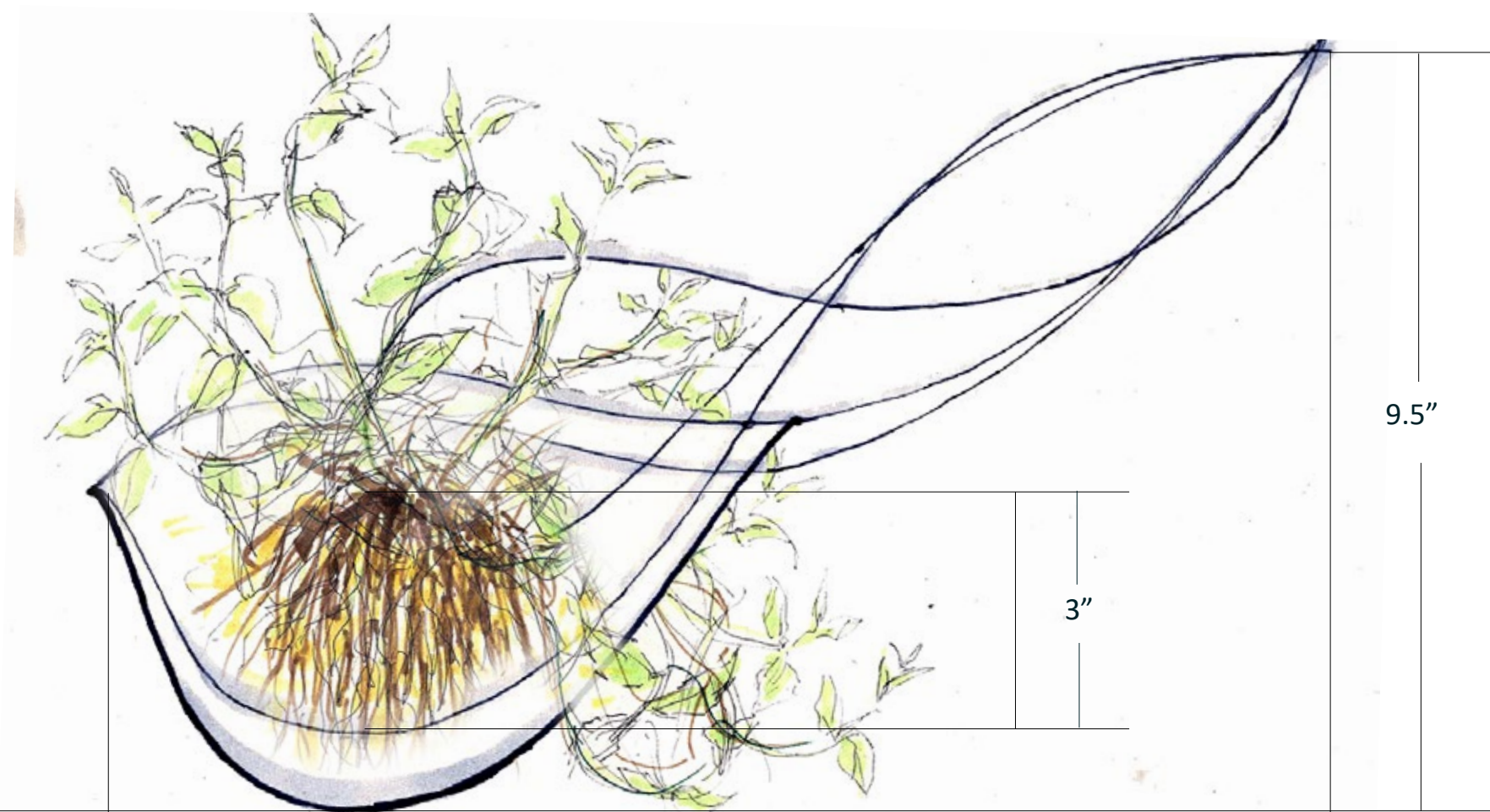
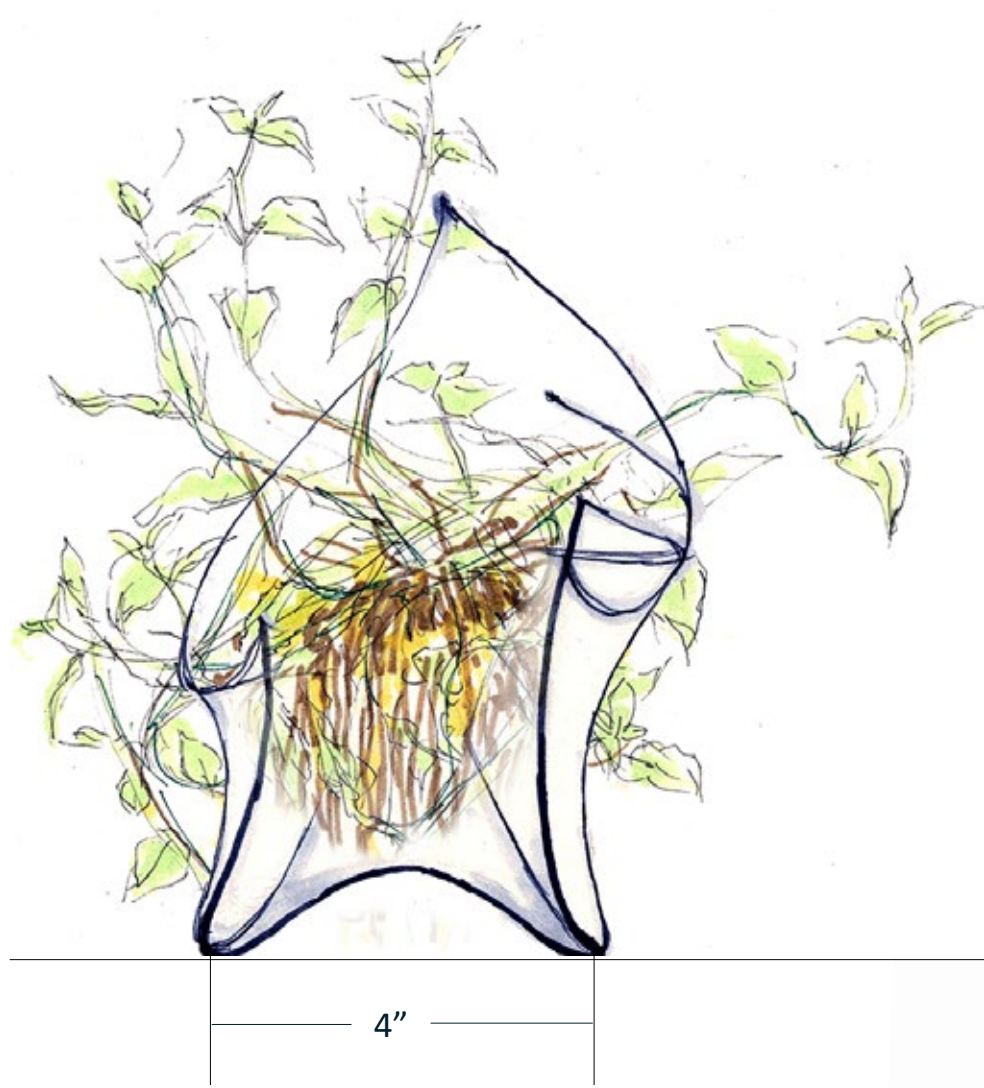


In this project focuses on designing a hanging armature for a specific plant that will be hung in the Phibbs Conservatory. The design should be specifically for the plant (meet its natural conditions), and inspired by the plant itself (like how it grows). The idea of "Sprawl" comes from the shape of my plant--peppermint. The peppermint stems sprawl to all directions and form intriguing geometric patterns that create space.



SPRAWL -- Phibbs Conservatory plant holder

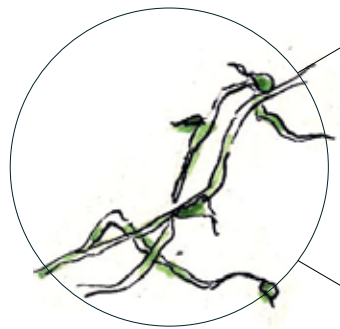




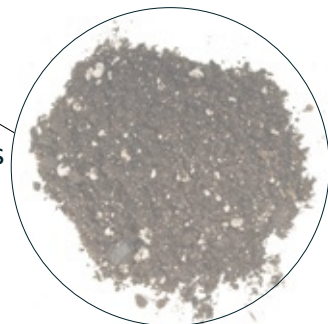
Peppermint leaves can dry out very easily. It's important to keep it hydrated.



Peppermint stems sprawl rampantly. But they can be a great asset by manipulating their growth.



Peppermint does not have high requirements on its soil. Almost any type works.



Scale: 6" = 1' - 0"